

recommended!!!

Miyajidake jinja(Shinto Shrine)



Sanctuary with a history over 1700 years. Famous for its bell, drum and Shimenawa(straw sacred rope), one of the largest in Japan. An approach leading to the beach is called HIKARINOMICHI(shining road). You might see it at sunset twice a year(FEB and OCT).



Tsuyazaki sengen



Old streets of late Edo period and Meiji period located in Tsuyazaki area. Major spots: AI-NO-IE(a former indigo dyeing workshop)(Registered Tangible Cultural Property);TOYOMURA-SHUZO(Sake brewery)



Fukuma beach

2km beautiful white sandy beach. Please enjoy marine sports, windsurfing, beach yoga and SUP. There are cafes and restaurants with wonderful view.



Sup and Beach Yoga



Oceanfront Cafe



Oceanfront Glamping Area

Fresh market & Farm

located at KATSUURA,northern part of Fukutsu.



"Anzu" Farmer's Market



"Umigame" Fisherman's Market

located at TSUYAZAKI fishing port



"Kuwano Farm" (Agriculture workshop)

Famous AMAOU branded strawberry picking experience from March to beginning of MAY. (reservation: TEL +81 9094713263) (Email:kuwano_nouen@yahoo.co.jp)

World heritage mounded tomb & Horse carriage tour

"Horse Plan" RESERVATION REQUIRED (reservation: TEL +81 940511292) (<http://horseplan.net>)



Tsuyazaki ningyo

"CHIKUZEN TSUYAZAKI CLAY DOLL FACTORY" doll maker the Haradas. MOMA ocarina (MOMA:OWL in Tsuyazaki dialect) is featured product. Available to painting experience on MOMA ocarina at several places in Fukutsu city. Contact with Fukutsu Tourist association, for further information.



Chikuzen Tsuyazaki ningyo kobo

(work shop)

Fukutsu Tourist Association

3-1-1,choo,Fukutsu,Fukuoka
(JR Fukuma station 2nd floor)
☎ +81 940429988
✉ info@fukutsukankou.com
<http://fukutsukankou.com>



homepage



facebook

When you feel difficult to communicate with facilities in Fukutsu or other KYUSHU/YAMAGUCHI area.

TRAVEL SUPPORT CALL CENTER

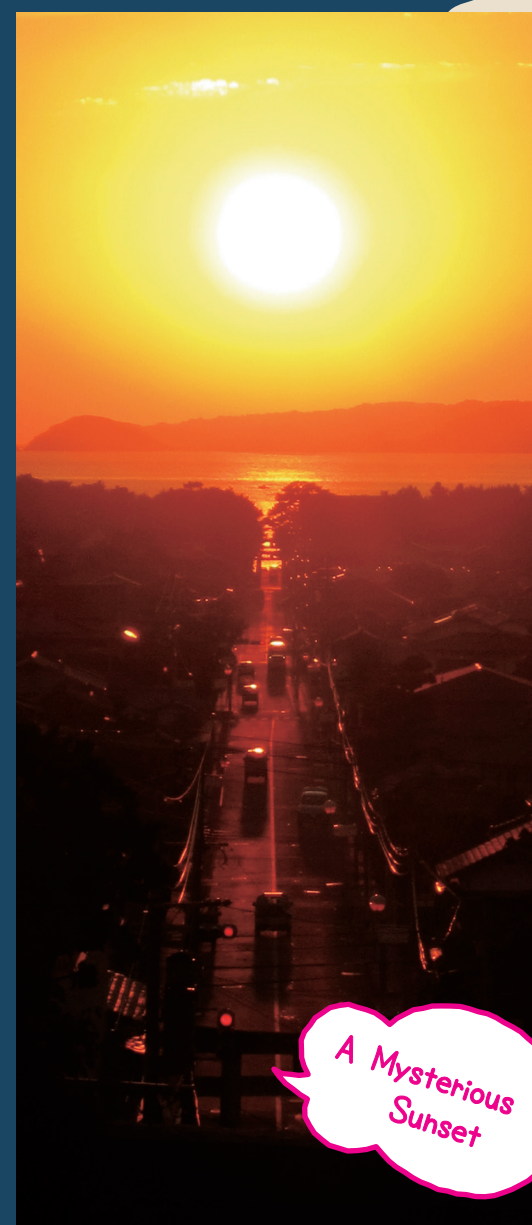
Free interpretation service/Standard call rate apply/24Hours/365-Days/15 Languages/
Service for International tourists only

Dial +81 926876639 (092-687-6639)

Issued on October 1,2018

FUKUTSU Tourist Map

Come Visit Us!!



A Mysterious Sunset



Ho Hoooo



One With Nature!!



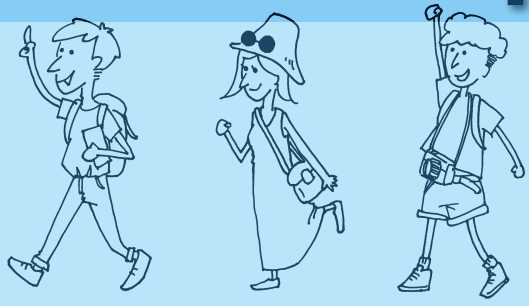
Festival!!



Photogenic!! ☆yummy

Fukutsu Tourist Association

FUKUTSU Tourist Map



HANAANZU

To MUNAKATA CITY, MUNAKATA SHRINE



WORLD HERITAGE Shinbaru Nuyama mounded tomb



•HORSE PLAN

Italian dining by real Napoli style



community space

UEDA-UNI-SHOP

OHMARUYA

local style kitchen

TOGO Shrine

SORATO CAFÉ

BINTAN

asian café

Fisherman's Market

UMIGAME

SORA TO UMI

small dining

MIU

Fisherman's kitchen

ryokan (Japanese Inn)

SHOJIKITEI

NAGOMI CENTER

TSUYAZAKI NINGYO

traditional local specialty clay doll factory

NAMIORI Shrine

SAKE Brewery

TOYOMURA SHUZO

traditional house, folk museum

AINOIE

Tsuyazaki Sengen Area (have the remains of old houses along the street)

ZENPUKUJI Temple

gallery & café

KURA

fresh bakery

YUMEKOBO

PATISSERIE ETOILES

SASABUNE

Japanese-style sweets

ISOTARO

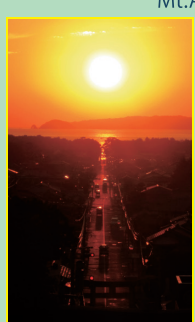
recommended [LIVE SQUID]

KAISHAN

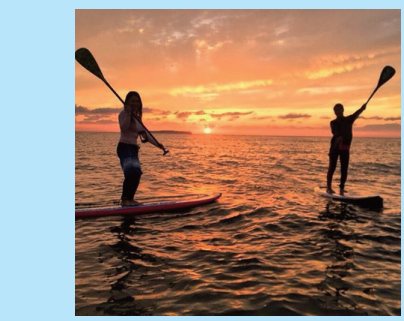
local fresh seafood dining

Fukutsu archeology museum

CAMELLIA STAGE



- Taxi Stand
- Bicycle Sharing Port
- Parking
- Bus Stop
- Convenience Store
- Gas Station
- Taichazuke Available throughout the year
- Marine Sports Shop
- View Point
- Japanese Cuisine
- Western Cuisine
- Chinese Cuisine
- Italian Cuisine
- Cafe
- Bakery & Sweets
- Miyajidake Speciality [matsugae-mochi]shop
- others



guest houses & beach huts

Tsuyazaki Beach

Miyajidake Beach

Fukuma Beach

Ocean Front Café

GLAMOUR CAMPING

resort villa

IRIE CAFÉ

Italian restaurant

GLAMPING MAR MARE

UMINOIRO

MAHALO

BEACH COMBER

LANAI

BOCCO VILLA

CAFÉ DE BOCCO

SEAGULL INN

ALOHA

CROSS ON

OISO

PANTAI BAGUS

SAKURA

SHINRIKI

sushi

LA SALLE A MANGER DE MIYAMOTO

OHANA-CHAYA

Japanese style café

surf shop & café

hideaway French dining

SHUNSHAN

SUWA Shrine

HOT SUNS

sandwich café

BEACH HOUSE TOURIST INFORMATION

HYPOR

stake house

Teppanyaki dining

TONARINO GRILL

KAISHIN-JI Temple

GLAMOUR CAFÉ

OHANA-CHAYA

YUYU

roasted coffee beans

OSAKAYA

JIDAIYA

recycle KIMONO shop

TENUGUIYA

NINGYOYA

Japanese towel shop

BISHIN

KARIN

MIYAJIKAN

MIYAJIDAKE Shrine

original OKONOMIYAKI kitchen

Miyajidake famous [MATSUGAE-MOCHI] + seafood dining

shrine style café

KAIUNDO

SHIMAYA

SAKAKIYA

KOMATSUYA

YUMEKASHIKO

GLASS BLOWING FACTORY

Glass blowing factory

Cute! clay made (beckoning cat)

QUATRE Q

cake house

AN

ROKUDENASHI

local RAMEN

ANTOKUMARU

FUKUTSU CITY OFFICE

GINGER

curry house

casual izakaya

HAKATA WABISUKE

cake house

CITRON

beer dining

HYDE PARK

ROSETTA

Italian dining

NAMAZU Shrine (catfish Shrine)

KUWANO FARM

Agriculture workshop

HIYOSHI Shrine

To KITAKYUSHU CITY, MUNAKATA SHRINE

To FUKUOKA CITY